

Belt driven guided linear unit  
 Linearantrieb mit Zahnriemen und integrierter Kugelumlauführung  
 Attuatori lineari a cinghia e guida a ricircolo di sfere



## MTB55 -XXXX-XX

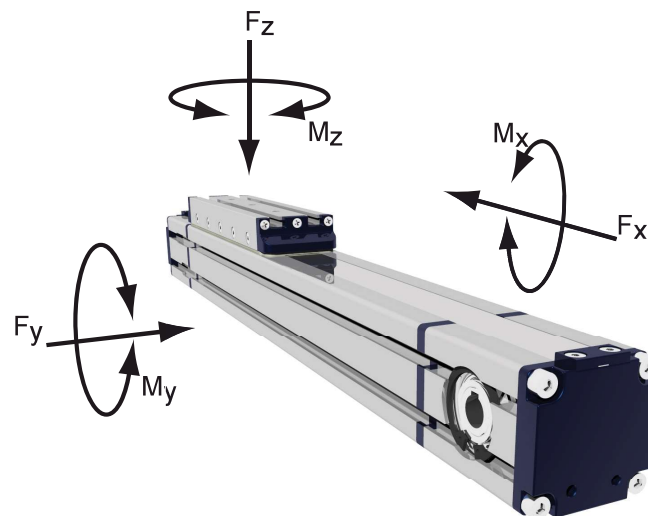
### TECHNICAL DATA - TECHNISCHE DATEN - - DATI TECNICI

Size - Baugröße - Taglia			55x55
Max. speed - Max. Geschwindigkeit - Velocità max		m/s	3
Max. stroke length - Max. Hub - Corsa max		mm	6700*
Min. stroke length - Min. Hub - Corsa min		mm	100
Pulley drive ratio - Hub pro Umdrehung - Corsa/giro puleggia		mm	120
Number of teeth of pulley - Zähne der Riemenscheibe - nr. denti puleggia			24
Teeth belt with Steel Reinforced Polyurethane ATL 5 profile clearance 0, width 16 mm ATL 5-Profil Riemen 16 mm Breite- 5mm Achsabstand Tipo di cinghia profilo ATL passo 5 larghezza 16 mm			
Max rpm - Max. Drehzahl der Antriebswelle - Max nr. di giri in ingresso		rpm	1500
Base weight - Gewicht bei 0mm Hub - Peso corsa 0 mm		Kg	4,8
Add for 100 mm of stroke - Gewicht bei 100mm Hub - Peso corsa 100 mm		Kg	0,37
Max. load* - Max. Belastung - Carico max*	Fx	N	820
	Fy	N	1850
	Fz	N	1850
Moments* - Max. Belastungsmoment* - Momenti max*	Mx	Nm	25
	My	Nm	120
	Mz	Nm	120
Inertia moment Aluminum profile - Flächenträgheitmoment - Momento d'inerzia profilo	Ix	cm <sup>4</sup>	36
Inertia moment Aluminum profile - Flächenträgheitmoment - Momento d'inerzia profilo	Iy	cm <sup>4</sup>	45
Repeatability - Wiederholgenauigkeit - Ripetibilità		mm	± 0,05
Max. radial load on input shaft - Max. axillasten an der Antriebswelle - Carico assiale max all'albero motore		N	300
No load torque - Leerlaufmoment - Coppia resistente		Nm	>0,5

The moments and the loads above are max. values. For any further information, please contact our technical department.

Die angegebenen Momente und Belastungen sind max. Werte, die nicht überschritten werden sollen. Für weitere Info, bitte wenden Sie sich an unserem Konstruktionsbüro.

I carichi e i momenti indicati sono massimi consigliati, per ulteriori informazioni consultare il ns ufficio tecnico.

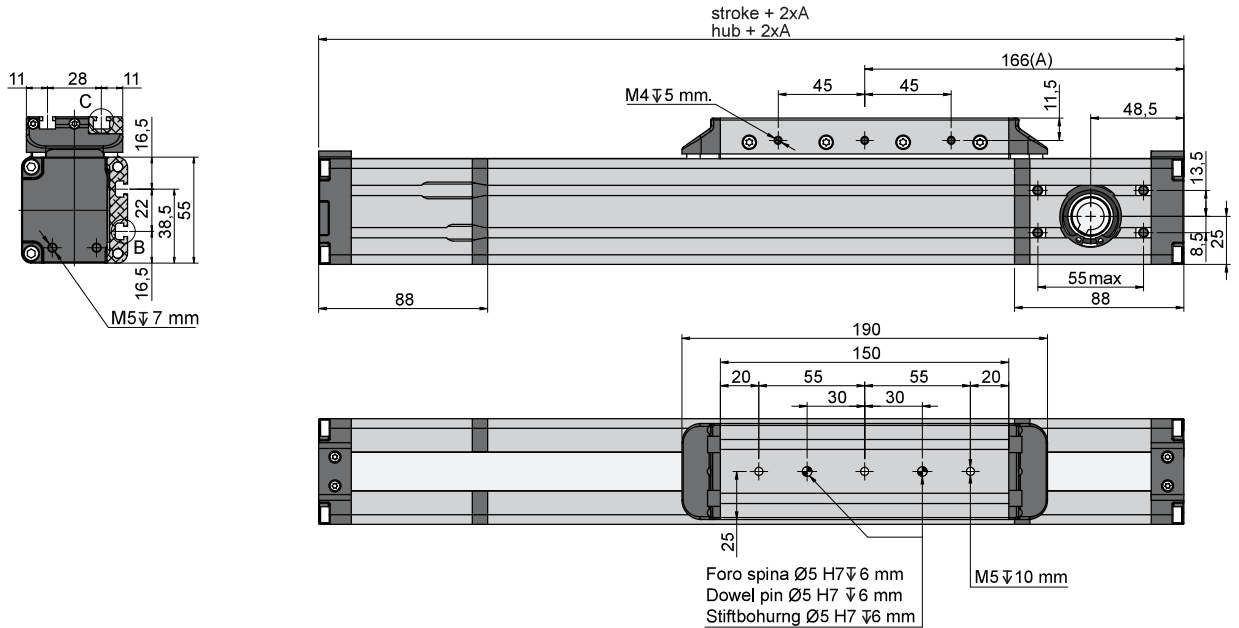


**Motus Tech S.r.l.**  
 Via G. Di Vittorio 33/3,  
 I-20068 - Peschiera Borromeo - Milan - Italy  
 Ph. +39 02 5470273  
 Fax +39 02 5475543

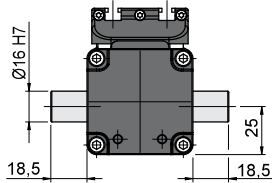
[www.motus-tech.com](http://www.motus-tech.com)  
[info@motus-tech.com](mailto:info@motus-tech.com)

**Motus Tech UG**  
 Auf dem Brühl 6  
 D-72658 Bempflingen - Germany  
 Ph. +49 7123 32402  
 Fax +49 7123 36580

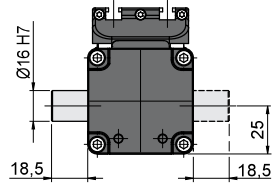
## MTB55-XXXX-XX



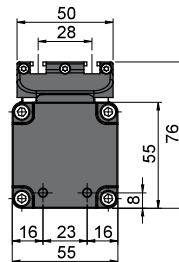
Versioni albero  
 Shaft version  
 Versionen Antriebswelle



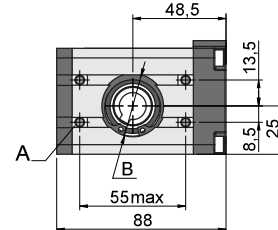
**D6**



**M6L-R**



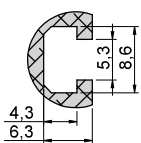
**F2 - F4**



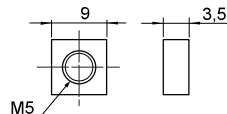
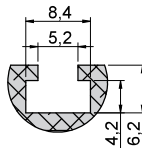
**A** Dadi quadri M5 DIN557 già inclusi  
 Square nut M5 DIN557 already included  
 Vierkantmutter M5 DIN557 im Lieferumfang enthalten

**B** Per tutte le versioni d'albero Ø32 H7 prof 1,5 mm  
 For all shaft version Ø32 H7 deep 1,5 mm  
 Für alle Wellen-Versionen Ø32 H7 1,5 mm tief

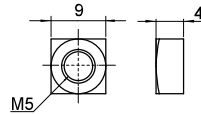
Vista B  
 View B  
 Ansicht C



Vista C  
 View C  
 Ansicht C



Codice: DQM05-01  
 Part n.: DQM05-01  
 Bestellcode: DQM05-01



Codice: DQM05  
 Part n.: DQM05  
 Bestellcode: DQM05

Ordering information:

**MTB55-0900-F4**

**Shaft version:**

F2: female shaft Ø12 mm with keyshaft  
 F4: female shaft Ø14 mm with keyshaft  
 M6L or R: male shaft Ø16 mm mount right or left  
 D6: double male shaft Ø16 mm

**Stroke mm**

**Series and size 55x55**



Left mount M6L  
 Antriebswelle  
 links M6L  
 Lato sinistro M6L



Dual mount D6  
 Doppelwelle D6  
 Doppio albero D6



Right mount M6R  
 Antriebswelle  
 rechts M6R  
 Lato destro M6R

**Motus Tech S.r.l.**

Via G. Di Vittorio 33/3,  
 I-20068 - Peschiera Borromeo - Milan - Italy  
 Ph. +39 02 5470273  
 Fax +39 02 5475543

[www.motus-tech.com](http://www.motus-tech.com)  
[info@motus-tech.com](mailto:info@motus-tech.com)

**Motus Tech OG**

Auf dem Brühl 6  
 D-72658 Bempflingen - Germany  
 Ph. +49 7123 32402  
 Fax +49 7123 36580