

Belt driven guided linear unit
 Linearantrieb mit Zahnriemen und integrierter Kugelumlauführung
 Attuatori lineari a cinghia e guida a ricircolo di sfere



MTB42-XXXX-XX

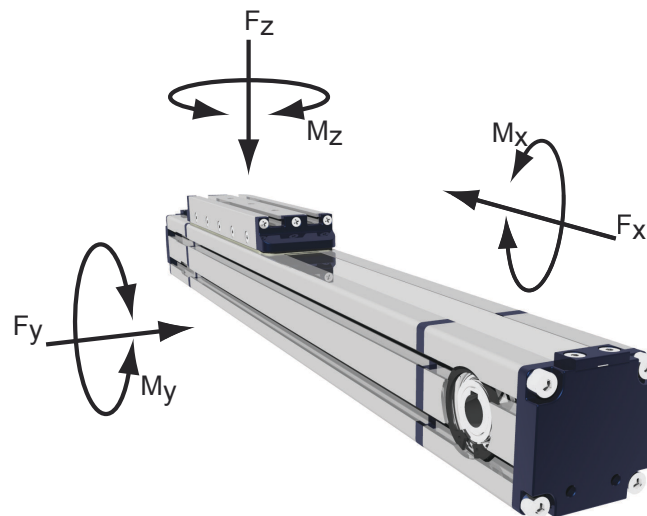
TECHNICAL DATA - TECHNISCHE DATEN - - DATI TECNICI

Size - Baugröße - Taglia			42x42
Max. speed - Max. Geschwindigkeit - Velocità max		m/s	3
Max. stroke length - Max. Hub - Corsa max		mm	6700*
Min. stroke length - Min. Hub - Corsa min		mm	100
Pulley drive ratio - Hub pro Umdrehung - Corsa/giro puleggia		mm	90
Number of teeth of pulley - Zähne der Riemenscheibe - nr. denti puleggia			18
Teeth belt with Steel Reinforced Polyurethane ATL 5 profile clearance 0, width 12 mm ATL 5-Profil Riemen 12 mm Breite- 5mm Achsabstand Tipo di cinghia profilo ATL passo 5 larghezza 12 mm			
Max rpm - Max. Drehzahl der Antriebswelle - Max nr. di giri in ingresso		rpm	2000
Base weight - Gewicht bei 0mm Hub - Peso corsa 0 mm		Kg	1,6
Add for 100 mm of stroke - Gewicht bei 100mm Hub - Peso corsa 100 mm		Kg	0,25
Max. load* - Max. Belastung - Carico max*	Fx	N	460
	Fy	N	1560
	Fz	N	1560
Moments* - Max. Belastungsmoment* - Momenti max*	Mx	Nm	20
	My	Nm	55
	Mz	Nm	55
Inertia moment Aluminum profile - Flächenträgheitmoment - Momento d'inerzia profilo	Ix	cm ⁴	11,8
Inertia moment Aluminum profile - Flächenträgheitmoment - Momento d'inerzia profilo	Iy	cm ⁴	14,2
Repeatability - Wiederholgenauigkeit - Ripetibilità		mm	± 0,05
Max. radial load on input shaft - Max. axillasten an der Antriebswelle - Carico assiale max all'albero motore		N	220
No load torque - Leerlaufmoment - Coppia resistente		Nm	>0,1

The moments and the loads above are max. values. For any further information, please contact our technical department.

Die angegebenen Momente und Belastungen sind max. Werte, die nicht überschritten werden sollen. Für weitere Info, bitte wenden Sie sich an unserem Konstruktionsbüro.

I carichi e i momenti indicati sono massimi consigliati, per ulteriori informazioni consultare il ns ufficio tecnico.



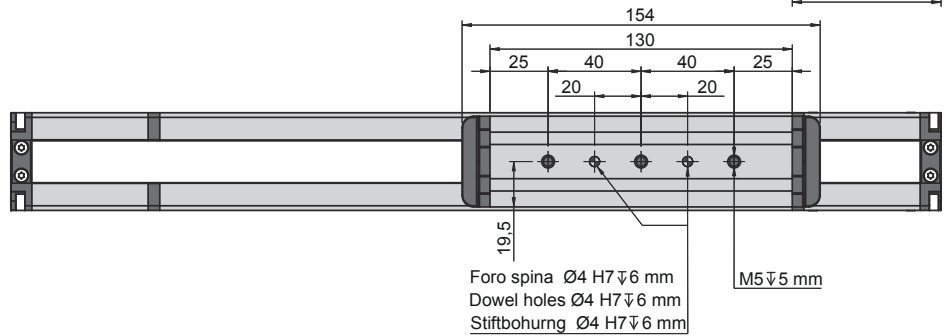
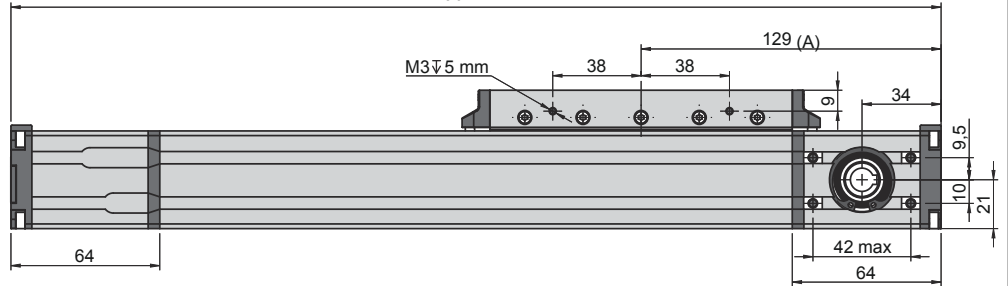
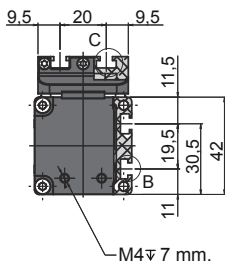
Motus Tech S.r.l.
 Via G. Di Vittorio 33/3,
 I-20068 - Peschiera Borromeo - Milan - Italy
 Ph. +39 02 5470273
 Fax +39 02 5475543

www.motus-tech.com
info@motus-tech.com

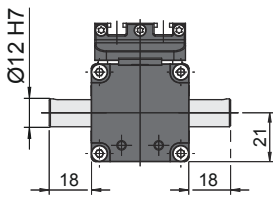
Motus Tech UG
 Auf dem Brühl 6
 D-72658 Bempflingen - Germany
 Ph. +49 7123 32402
 Fax +49 7123 36580

MTB42-XXXX-XX

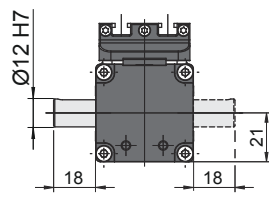
Corsa + 2xA
 Stroke + 2xA
 Hub + 2xA



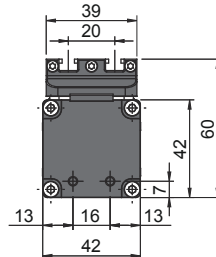
Versione albero
 Shaft version
 Versionen Antriebeswelle



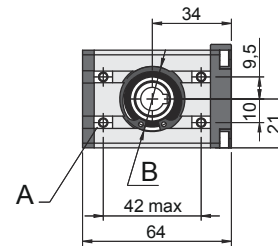
D2



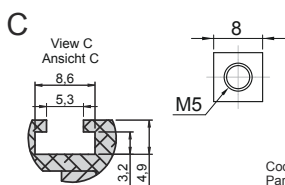
M2L-R



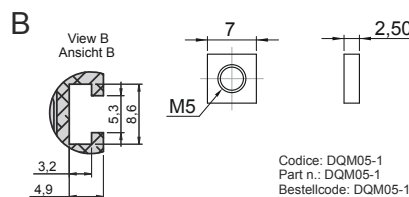
F2-F0



A Dadi quadri M5 DIN526 già inclusi
 Square nut M5 DIN526 already included
 Vierkantmutter M5 DIN526 im Lieferumfang enthalten



Codice: DQM05-2
 Part n.: DQM05-2
 Bestellcode: DQM05-2



Codice: DQM05-1
 Part n.: DQM05-1
 Bestellcode: DQM05-1

B Per tutte le versioni d'albero $\text{Ø}32$ H7 prof. 1,5 mm
 For all shaft version $\text{Ø}32$ H7 deep 1,5 mm
 Für alle Wellen-Versionen $\text{Ø}32$ H7 tief 1,5 mm

Ordering information: MTB42-0900-F2

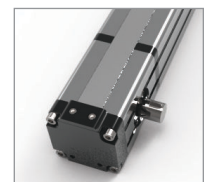
Shaft version:
 F0: female shaft $\text{Ø}10$ mm with keyshaft
 F2: female shaft $\text{Ø}12$ mm with keyshaft
 M2L or R: male shaft $\text{Ø}12$ mm mount right or left
 D2: double male shaft $\text{Ø}12$ mm
 Stroke mm
 Series and size 42x42



Left mount M2L
 Antriebswelle
 links M2L
 Lato sinistro M2L



Dual mount D2
 Doppelwelle D2
 Doppio albero D2



Right mount M2R
 Antriebswelle
 rechts M2R
 Lato destro M2R

Motus Tech S.r.l.

Via G. Di Vittorio 33/3,
 I-20068 - Peschiera Borromeo - Milan - Italy
 Ph. +39 02 5470273
 Fax +39 02 5475543

www.motus-tech.com
info@motus-tech.com

Motus Tech AG

Auf dem Brühl 6
 D-72658 Bempflingen - Germany
 Ph. +49 7123 32402
 Fax +49 7123 36580